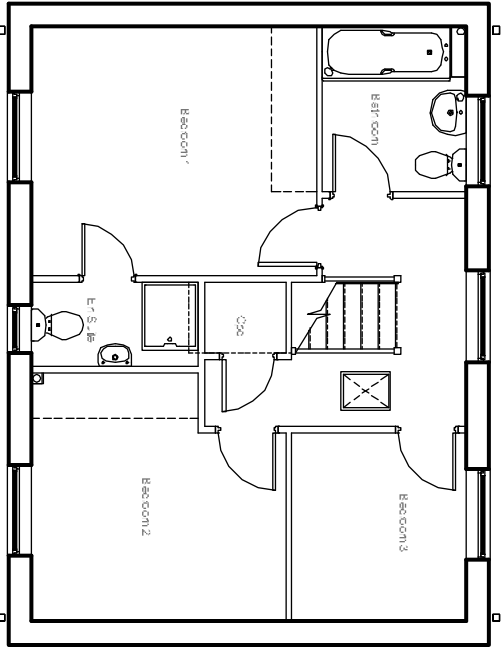


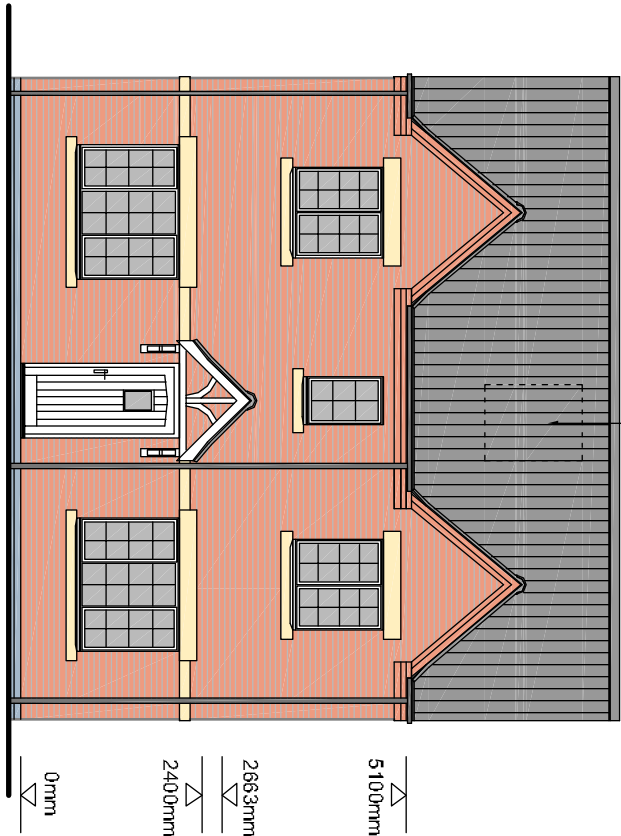
Revision	Date	By	Chkd	No
A	30/11/10	JEB	NH	A
Alterations following planners comments.				
B	12/11/11	JEB	NH	B
Alterations following clients comments.				
C	24/02/11	JEB	NH	C
Alterations following planners comments.				
D	29/03/11	JEB	NH	D
Floor heights added.				
E	17/05/11	JEB	NH	E

P-2011-00546

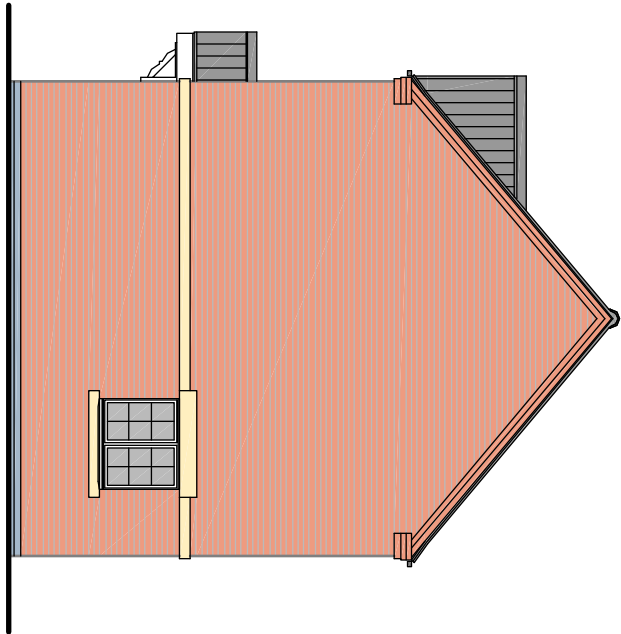
Received 19/05/11



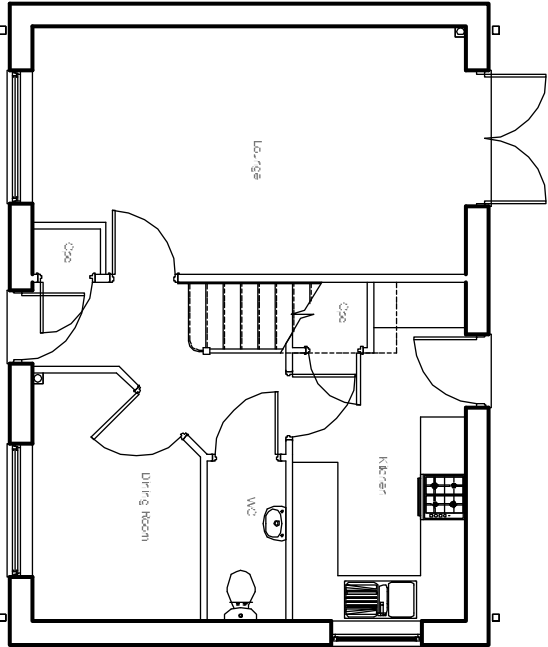
First Floor Plan



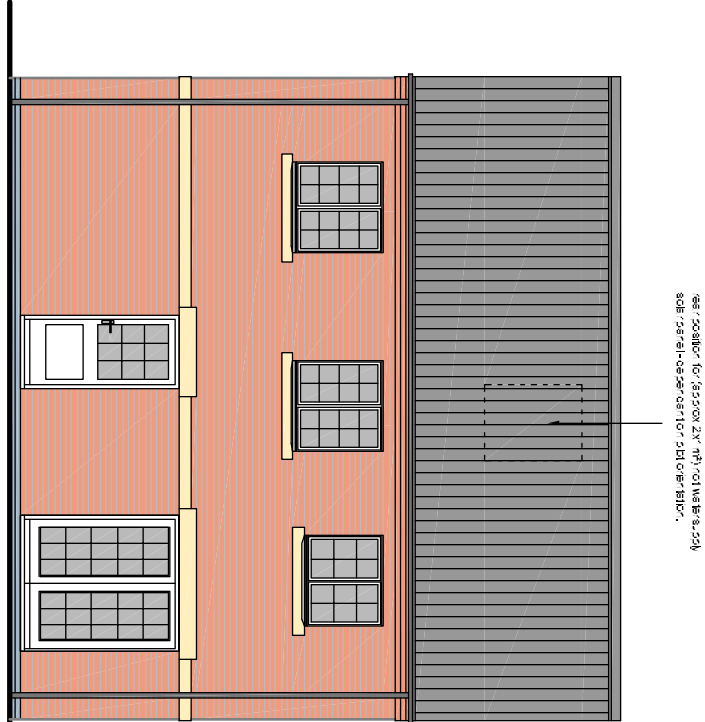
Front Elevation



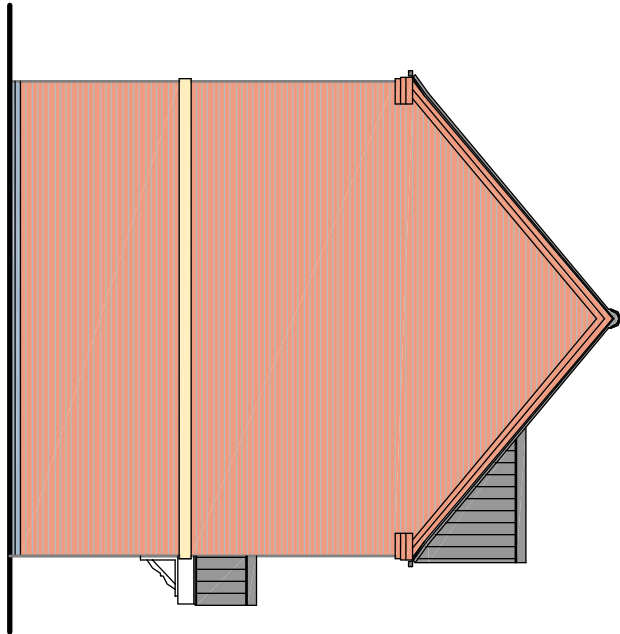
Side Elevation



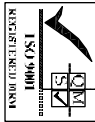
Ground Floor Plan



Rear Elevation



Side Elevation



Ground Floor Area: 46.1m<sup>2</sup> / 496.5 sq ft  
First Floor Area: 45.2m<sup>2</sup> / 486.7 sq ft  
Total Floor Area: 91.3m<sup>2</sup> / 983.2 sq ft

